



RS Composite Utility Poles

RS Gin Pole



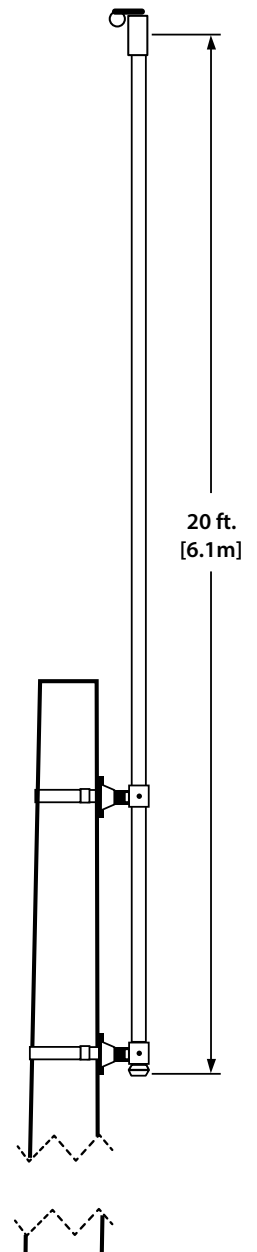
Pole Installation By Hand

The RS Gin Pole enables RS poles up to 78 ft. [23.8m] in length to be installed by hand. The RS Gin Pole reduces installation time and cost in backyard and difficult to access locations when installing distribution-sized poles by avoiding the need for heavy equipment to be used.

RS Gin Pole Characteristics

RS Gin Poles have the following characteristics:

- Up to 78 ft. [23.8m] pole assembly by hand in less than 3 hours with a crew of 3
- Certified to O.S.H.A. standard 1926.1441
- 5:1 lifting safety factor
- Certified to lift RS modules M1L, M1, M2, M3 and M4
- Total Gin Pole weight is only 86 lb [39kg] for easy movement up the pole as assembly progresses
- Full scale tested
- Full work instructions included using tools commonly carried by line crews



Engineered Solutions

RS Gin Poles are engineered, full scale tested and certified for performance in the most challenging field applications.



RS Composite Utility Poles

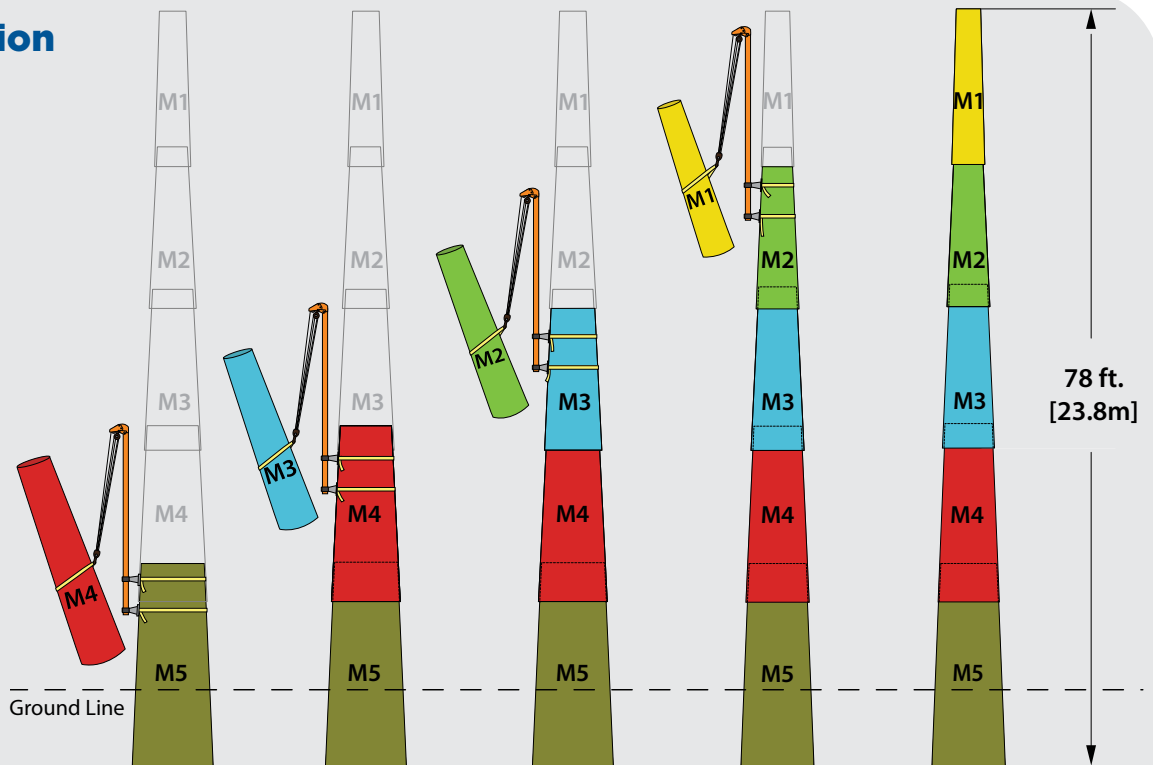
INFRASTRUCTURE FOR LIFE®



RS Gin Pole Operation

The RS Gin Pole allows poles up to 78 ft. [23.8m] to be assembled by hand with no additional tools required. The diagram to the right details the assembly sequence:

1. The base module (M5) is installed in the ground and the Gin Pole is attached to the base module with ratchet straps.
2. The next module (M4) is lifted above the base module (M5) and the slip joint is assembled.
3. The Gin Pole is moved up to the top module (M4) and the next module (M3) is lifted and the slip joint assembled.
4. The process is repeated until the pole is assembled.



Note: Although a full length 0105 RS pole is depicted, consisting of modules 1, 2, 3, 4 and 5, the RS Gin Pole can be used to assemble any length pole up to 78 ft. [23.8m] consisting of any permutation of the modules shown.

Note: Diagram not to scale.



Corporate Office
3553 31 Street NW
Calgary, AB Canada
T2L 2K7

Manufacturing
22 Industrial Park Road
Tilbury, ON Canada
N0P 2L0

www.RSpoles.com

Email Info@RSpoles.com
Toll Free +1 877 219 8002
Phone +1 519 682 5202
Fax +1 519 682 3786



“Infrastructure For Life” is a registered trademark of RS Technologies Inc.

*Disclaimer - The following contained herein is offered only as a guide for the RS Gin Pole and has been prepared in good faith by technically knowledgeable personnel. This brochure is for information only and could be modified without notice.

RS GP V1.1